



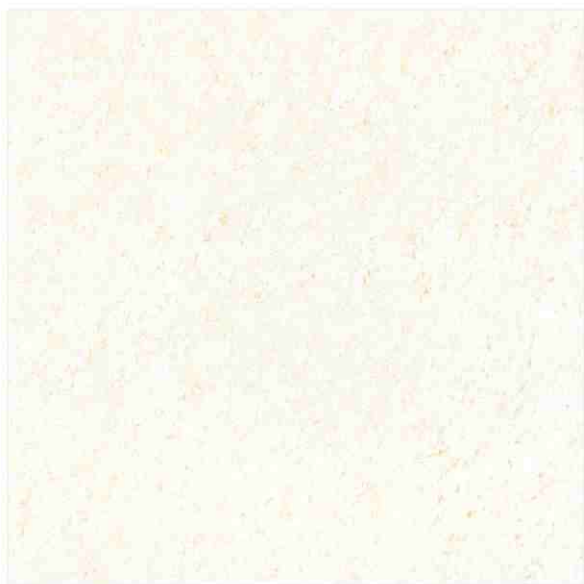
Sanitary Ware | Wall Tiles | Floor Tiles | Vitrified Tiles



www.lemorexgranito.com

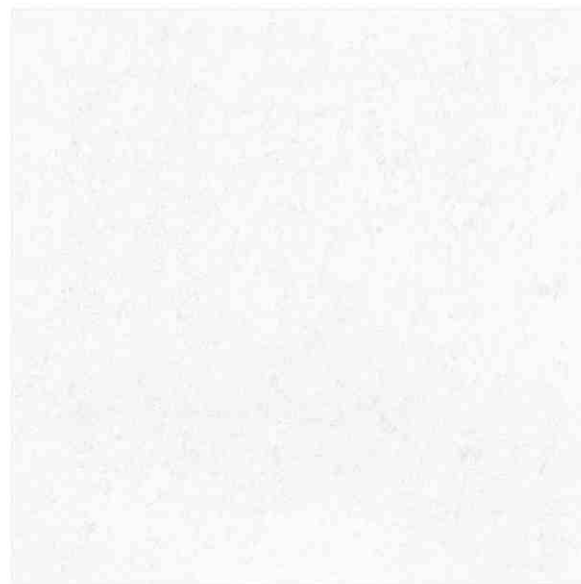
600x600mm | 800x800mm
Double Charged Vitrified Tiles | Double Charged Vitrified Tiles

E D D I T I O N : 2 0 1 8



LG - CREAMA

8001



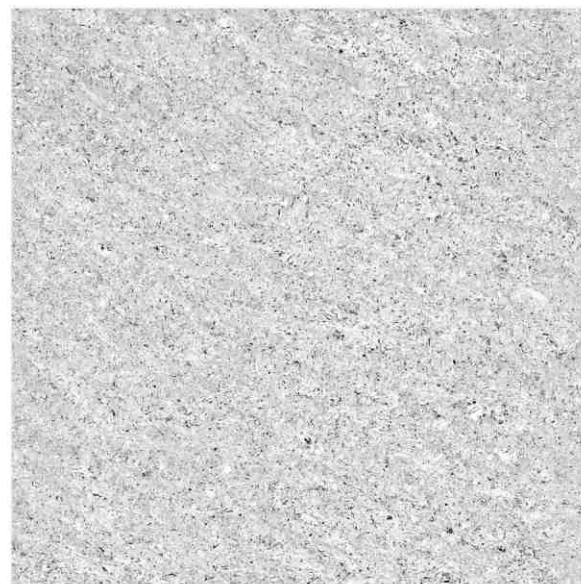
LG - WHITE

8002



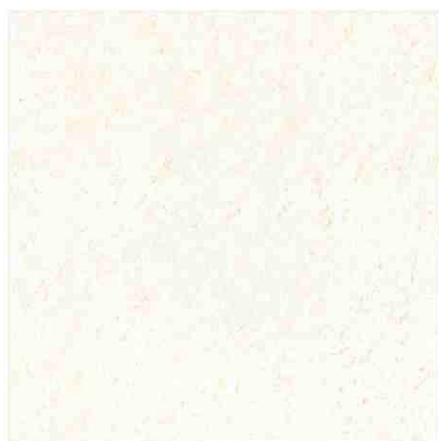
LG - ASH

8107



LG - JAZZ

8108



LEMO CREAMA

1001



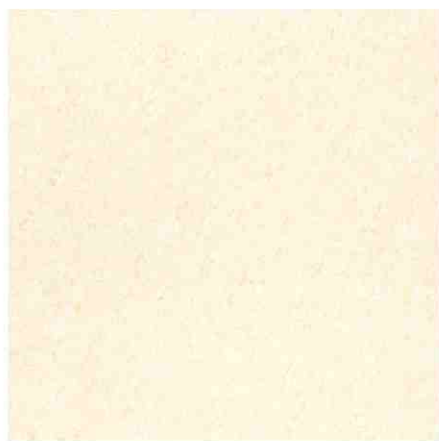
LEMO WHITE

1002



LEMO PEARL

1004



LEMO GOLD

1005



LEMO CORAL

1006



LEMO BEIGE

1007





LEMO GREEN

1101



LEMO COPPER

1102



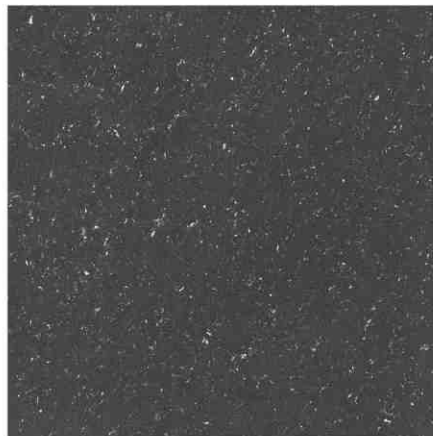
LEMO CHOCO

1103



LEMO BLUE

1104



LEMO BLACK

1105



LEMO ALMOND

1106



LEMO ASH

1107



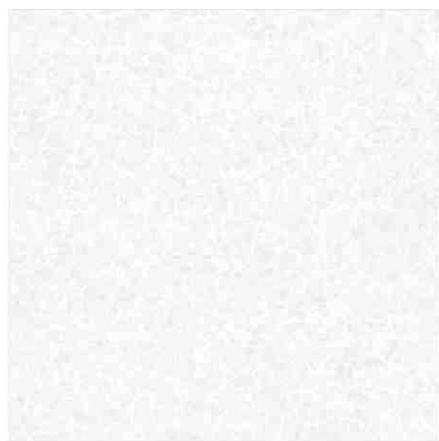
LEMO JAZZ

1108



LEMO CHERRY

1109



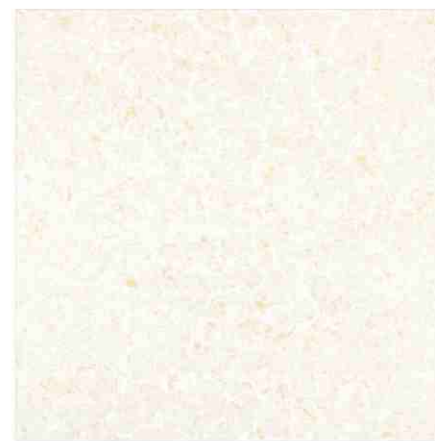
REX WHITE

2001



REX WONDER

2002



REX GOLD

2003



REX BROWN

2101



REX BLACK

2103



Technical Specification of Lemorex Double Charged Vitrified Tiles

Sr. No.	Particulars	Standard as per ISO 13003/EN176 Group Bla	LEMOREX GRANITO Value	Method of Testing
01	Deviation in length	± 0.60 %	± 0.10 %	ISO 10545 - 2
02	Deviation in Thickness	± 5 %	± 2 %	ISO 10545 - 2
03	Straightness Of Side	± 0.50 %	± 0.10 %	ISO 10545 - 2
04	Rectangularity	± 0.60 %	± 0.20 %	ISO 10545 - 2
05	Surface Flatness	± 0.50 %	± 0.20 %	ISO 10545 - 2
06	Water Absorption	< 0.05 %	< 0.05 %	ISO 10545 - 2
07	Mohs Hardness	< 6	< 6	EN 101
08	Flexural Strength	> 35 N/mm ² %	> 45 N/mm ² %	ISO 10545 - 4
09	Abrasion Resistance	> 175mm ² %	> 144mm ²	ISO 10545 - 6
10	Skid Resistance	> 0.4 %	> 0.4	ISO 10545 -17
11	Breaking Strength	1113 N %	> 2500 n	ISO 10545 -4
12	Density (g/cc)	> 2	2.4	ISO 10545 -3
13	Frost Resistance	Frost Proof	Frost Proof	ISO 10545 -12
14	Chemical Resistance	No damage	No damage	ISO 10545 -13
15	Thermal Shock Resistance	No damage	No damage	ISO 10545 -9
16	Coulour Resistance	No damage	No damage	DIN 51094
17	Thermal Expansion	> 9 x 10 ⁻⁶	> 6 x 10 ⁻⁶	ISO 10545 -8
19	Moisture	Nil	Nil	DIN 51094
20	Glossiness	> 65 % Refleccation	Glossmater

Packing Details of Lemorex Double Charged Vitrified Tiles

Sr. No.	Size	No. of Tiles / Boxes	Coverage Area		Approx Weight / Box
1	600x600mm	4	1.44 Sq.Mtr.	15.50 Sq.Ft.	28.00 Kgs.
2	800x800mm	3	1.92 Sq.Mtr.	20.666 Sq.Ft.	40.00 Kgs.

Note :

The reproduction of tiles in this catalogue is restricted to four colour printing only and tiles are not relative in sizes. Conforming to ISO requirements, technical specifications of Lemorex are applicable only for first grade / first quality vitrified. Please inspect all tiles prior to installation. Company will not entertain complaints once tiles are laid / fixed. Price category may change without any notice. Customers are advised to confirm it before placing order.

EXCLUSIVE APPLICATIONS



KALASH IMPEX

8-A National Highway,
Morbi-2. (Guj.) INDIA.

E-mail : kalashimpex2016@gmail.com